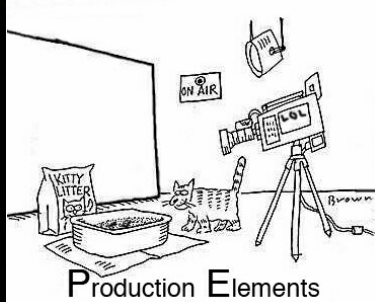
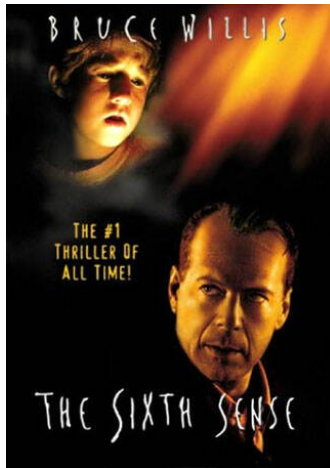


YEAR 10 MEDIA

FILM ANALYSIS ASSESSMENT TASK



Your task is to choose one scene from *The Sixth Sense* and write an analysis of it. This is not the same as a film review. An analysis looks at the specific elements of the scene and how they combine to engage the audience.

Your analysis should comment on the following elements:

1. **Camera work** (*framing, angle, focus, movement, Point Of View*)
2. **Sound** (*music, sound, instruments, sound effects, voice over*)
3. **Lighting** (*colour, brightness, shadows, darkness, tones, could grades*)
4. **Editing** (*cuts, fades, fade to black or white, jump cuts, flash forwards*)
5. **Acting** (*body language, facial expression, voice, hand gestures*)
6. **Visual composition** (*everything in shot – Mise-En-Scene*)
7. **Setting** (*where was the scene shot and why?*)
8. **Time** (*where was the scene placed in the narrative – Opening, Development or Resolution and its importance to the plot*)

Your analysis should be in the range of 300 – 400 words. You can present this analysis in whatever format you want. My advice is to select a scene that had a lot of impact on you, after all you are the audience. The scene should be a suitable length of time. For example: Five or more minutes.

Remember to identify exactly which scene you are writing about. Eg – “Kitchen” scene